

LIFE/work balance

# CLASSROOM *Secrets*

## #LIFEworkbalance

We have started a #LIFEworkbalance campaign and we need your help to complete our LIFE/work balance survey.

We hope to publish the results soon, so please give 15 minutes of your time to help us get a true picture of school life.

Want to be a part of this campaign? Take the [survey](#) on our website and share it with your colleagues!

## Year 4 – Summer Block 5 – Properties of Shape – Quadrilaterals

### About This Resource:

This PowerPoint has been designed to support your teaching of this small step. It includes a starter activity and an example of each question from the Varied Fluency and Reasoning and Problem Solving resources also provided in this pack. You can choose to work through all examples provided or a selection of them depending on the needs of your class.

### National Curriculum Objectives:

Mathematics Year 4: (4G2a) [Compare and classify geometric shapes, including quadrilaterals and triangles based on their properties and sizes](#)

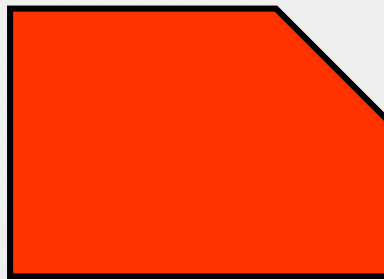
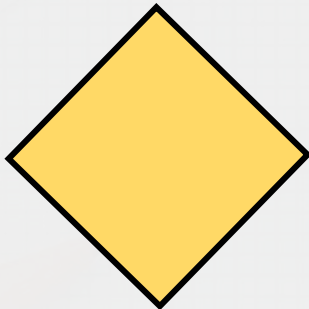
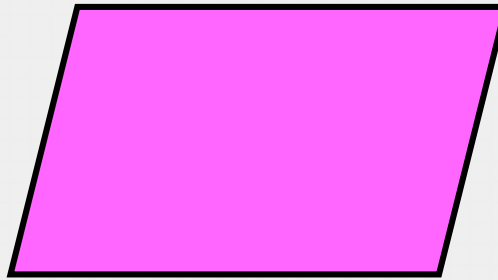
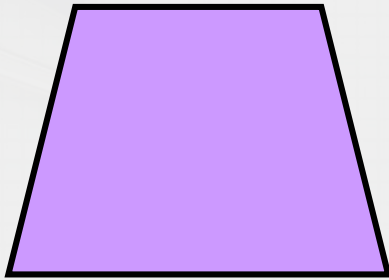
More [Year 4 Properties of Shapes](#) resources.

Did you like this resource? Don't forget to [review](#) it on our website.

# Step 4: Quadrilaterals

## Introduction

Which is the odd one out? Explain your choice.



Name each shape.

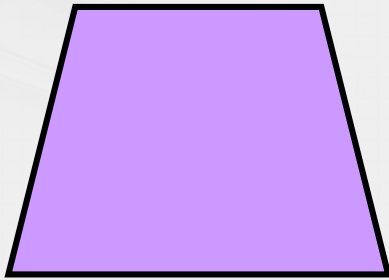


## Introduction

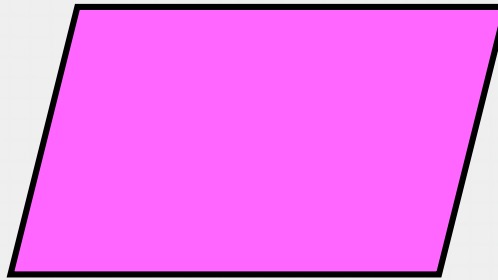
Which is the odd one out? Explain your choice.

**Example answer:**

**The pentagon is the odd one out as all of the others are quadrilaterals.**



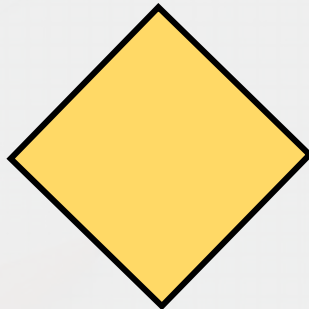
trapezium



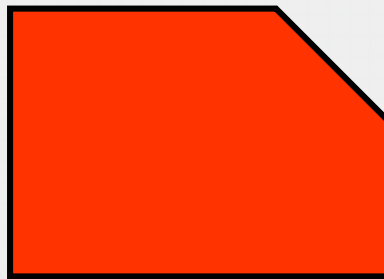
parallelogram



rectangle



square



pentagon



rhombus

**Name each shape.**

Varied Fluency 1

Draw lines to match the true statements to the shape.

It is a rectangle

It has 5 right angles

It has 3 sides

It has equal sides

It has 4 sides



Varied Fluency 1

Draw lines to match the true statements to the shape.

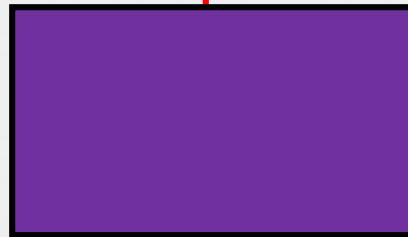
It is a rectangle

It has 5 right angles

It has 3 sides

It has equal sides

It has 4 sides



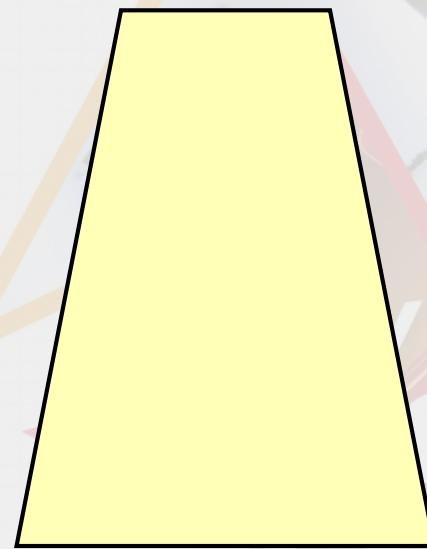
## Varied Fluency 2

Fill in the blanks to describe the shape.

This shape has \_\_\_\_\_ sides.

It has \_\_\_\_\_ right angles.

It has \_\_\_\_\_ pair of parallel sides.





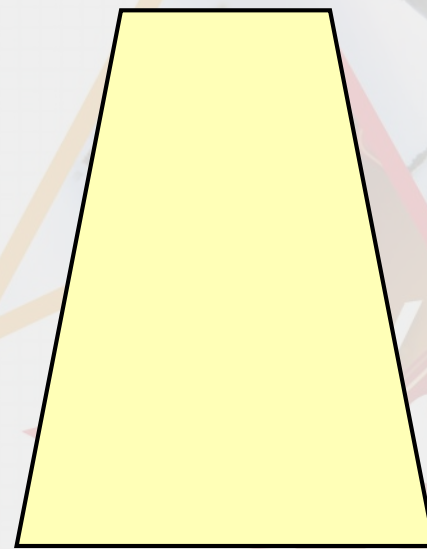
## Varied Fluency 2

Fill in the blanks to describe the shape.

This shape has 4 sides.

It has 0 right angles.

It has 1 pair of parallel sides.



## Varied Fluency 3

**Draw the shape using the description below.**

**The shape has:**

- **4 sides**
- **4 right angles**

**What shape have you drawn?**

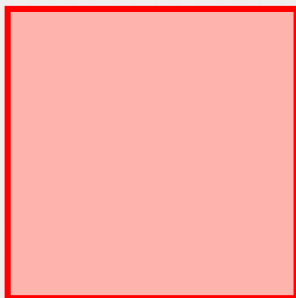
## Varied Fluency 3

Draw the shape using the description below.

The shape has:

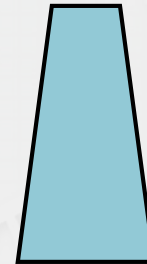
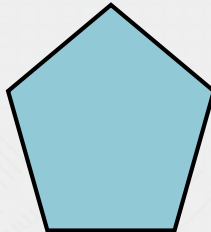
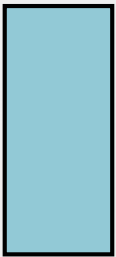
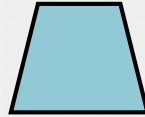
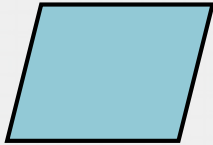
- 4 sides
- 4 right angles

What shape have you drawn?



Varied Fluency 4

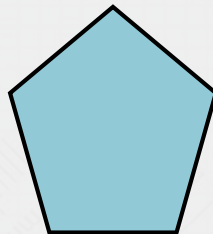
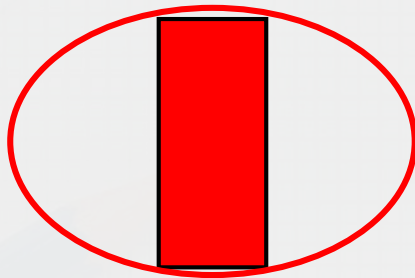
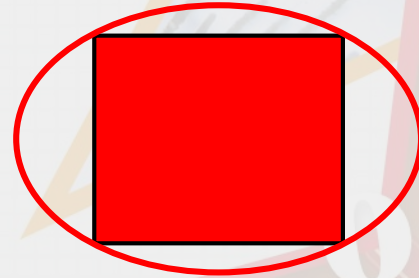
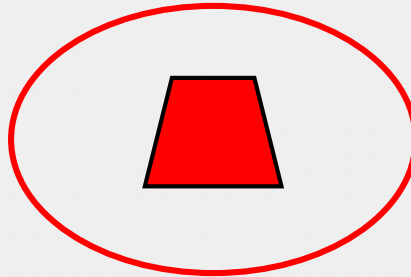
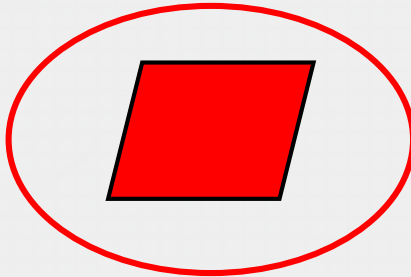
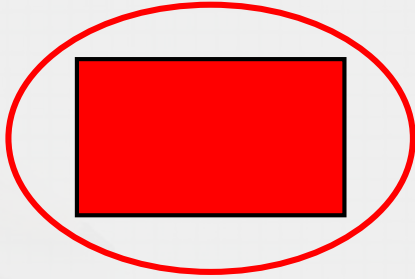
Circle the quadrilaterals.





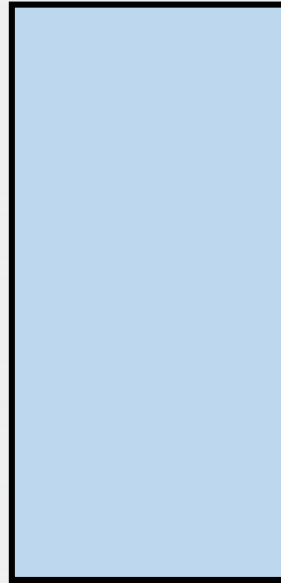
Varied Fluency 4

Circle the quadrilaterals.



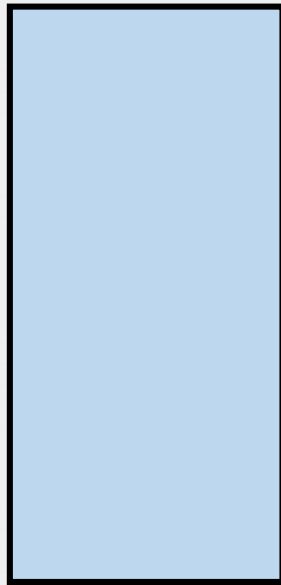
## Reasoning 1

**What is the same about these two shapes?  
What is different?**



## Reasoning 1

**What is the same about these two shapes?  
What is different?**



**Various answers, for example:**

**Same: 4 sides; 4 right angles; 2 pairs of parallel sides**

**Different: size; orientation**

## Problem Solving 1

**Tina is thinking of a shape. It has:**

- **4 equal length sides**
- **No right angles**

**What shape could Tina be thinking of? Give all possible answers.**



## Problem Solving 1

**Tina is thinking of a shape. It has:**

- **4 equal length sides**
- **No right angles**

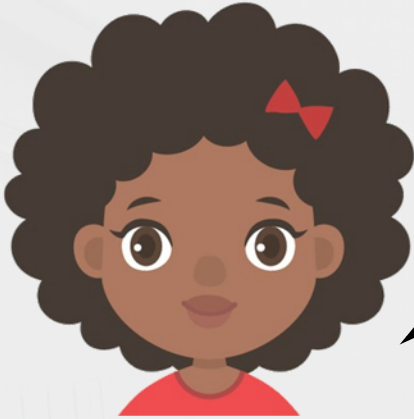
**What shape could Tina be thinking of? Give all possible answers.**

**Tina could be thinking of a rhombus.**



## Reasoning 2

Jenny thinks that the shape matches her statement.



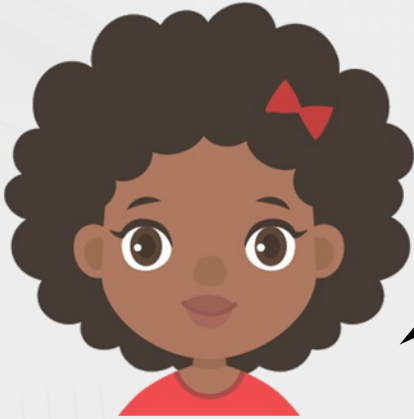
This quadrilateral has  
1 pair of parallel lines  
and 0 right angles.



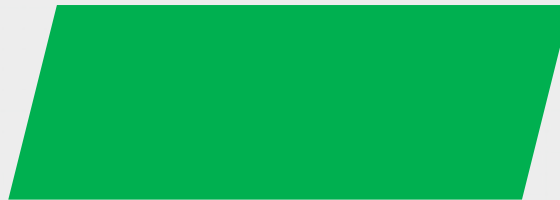
Is she correct? Explain your answer.

## Reasoning 2

Jenny thinks that the shape matches her statement.



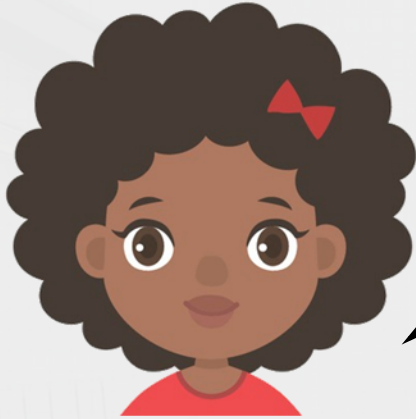
This quadrilateral has  
1 pair of parallel lines  
and 0 right angles.



Is she correct? Explain your answer.  
Jenny is incorrect because...

## Reasoning 2

Jenny thinks that the shape matches her statement.



This quadrilateral has  
1 pair of parallel lines  
and 0 right angles.



Is she correct? Explain your answer.

**Jenny is incorrect because this quadrilateral is a parallelogram so it has 2 pairs of parallel lines and no right angles.**