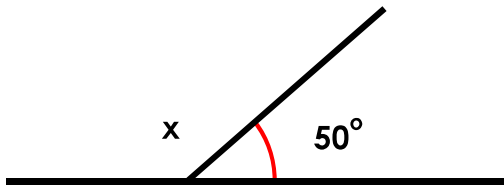


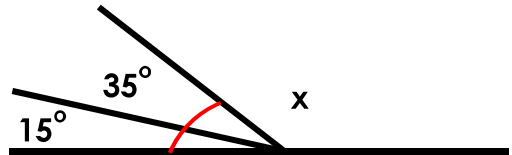
Angles on a Straight Line

1. True or false? Both missing angles marked x are 130° .

A.



B.

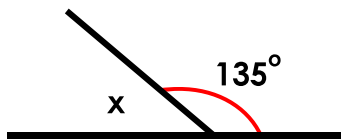


Angles not drawn to scale

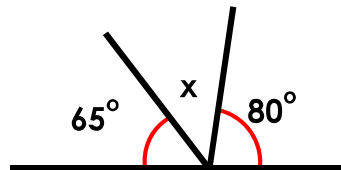
VF
HW/Ext

2. Which line has a missing angle of 35° ?

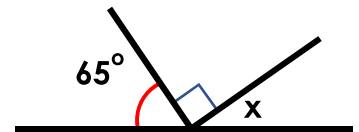
A.



B.



C.



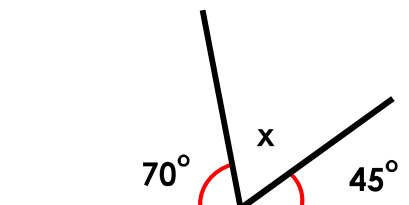
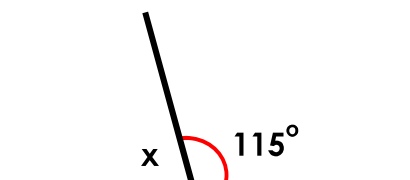
Angles not drawn to scale

VF
HW/Ext

3. Paddy thinks that his missing angle is smaller than Kim's.



Paddy



Kim

Is he correct? Explain your answer.



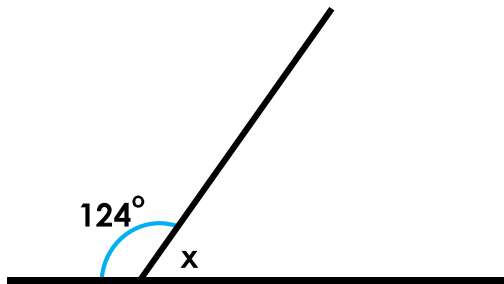
Angles not drawn to scale

RPS
HW/Ext

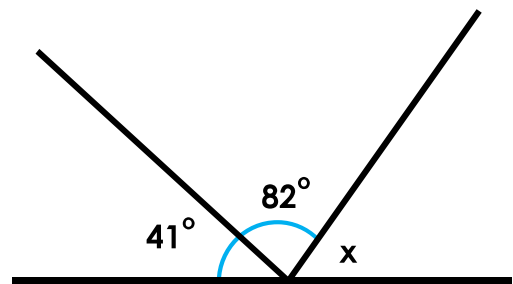
Angles on a Straight Line

4. True or false? Both missing angles marked x are 57° .

A.



B.

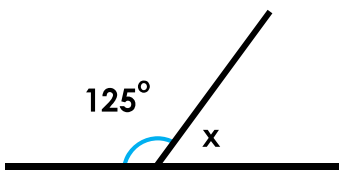


Angles not drawn to scale

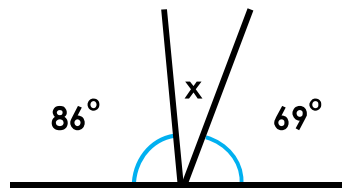
VF
HW/Ext

5. Which line has a missing angle of 22° ?

A.



B.



C.



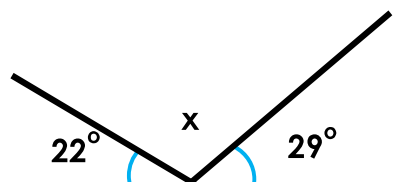
Angles not drawn to scale

VF
HW/Ext

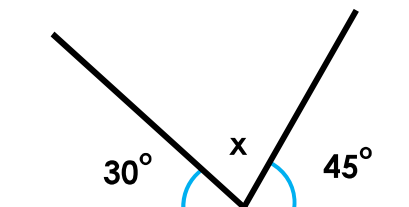
6. Florence thinks that her missing angle is bigger than Freya's.



Florence



Freya



Is she correct? Explain your answer.



Angles not drawn to scale

RPS
HW/Ext

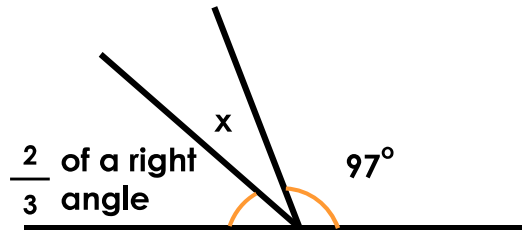
Angles on a Straight Line

7. True or false? Both missing angles marked x are 32° .

A.



B.

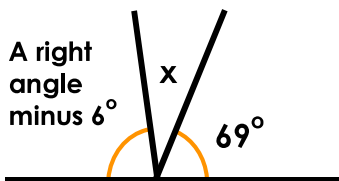


Angles not drawn to scale

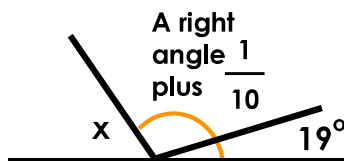
VF
HW/Ext

8. Which line has a missing angle of 63° ?

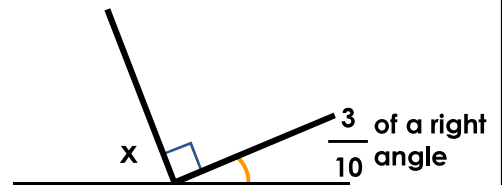
A.



B.



C.



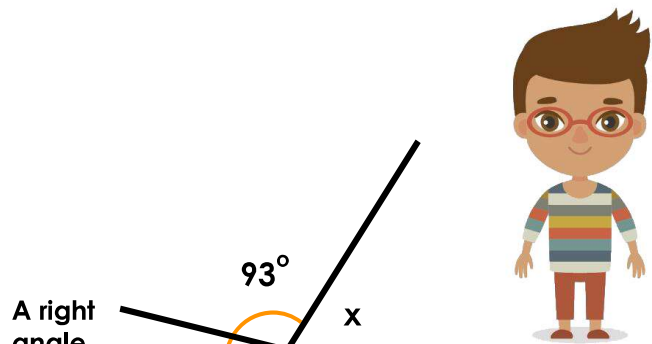
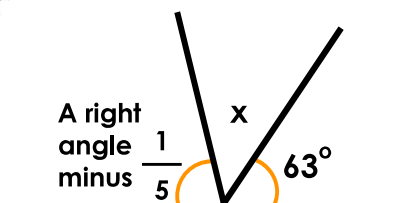
Angles not drawn to scale

VF
HW/Ext

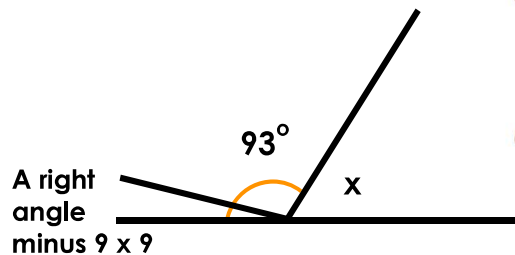
9. Betty thinks that her missing angle is half the size of Dan's missing angle.



Betty



Dan



Is she correct? Explain your answer.



Angles not drawn to scale

RPS
HW/Ext