


Year 1 Home Learning

Week Beginning 16.11.20

Each week the home learning will be closely linked to what we will be covering in the classroom. The theme for learning each day is identified in the table below and you are encouraged to explore other websites such as BBC Bitesize, <http://www.bbc.co.uk/bitesize> to supplement the learning.

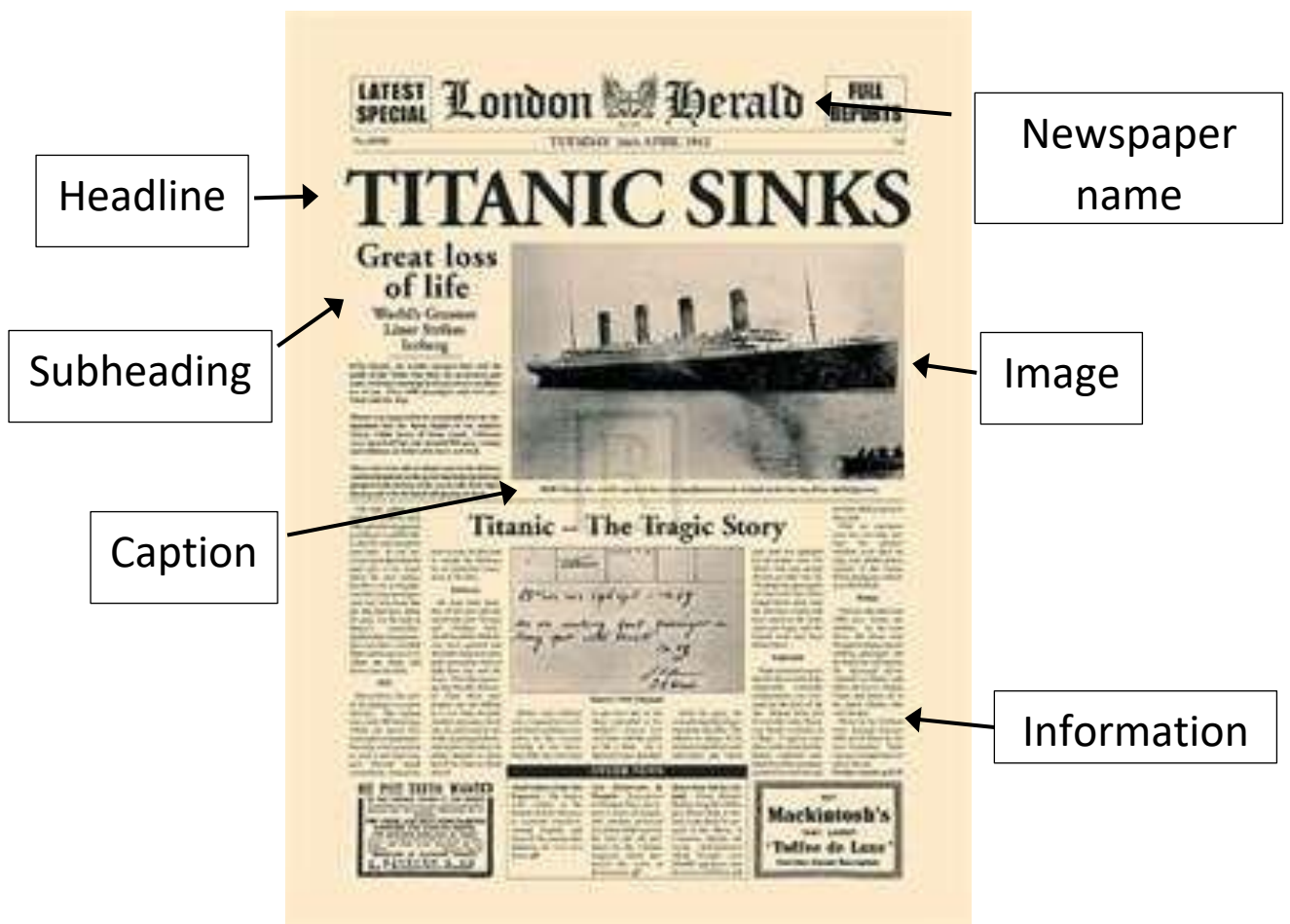
Home learning can be placed in your child's homework book. If you require any further support please contact the school.

Phonics and reading: https://www.oxfordowl.co.uk/for-pupils/pupil-home?current_page=school_ebooks

Click on:  My class name: dawleyyear1 My class password: 12345

	Maths	English	Topic
	Shapes and Patterns https://classroom.thenational.academy/units/s/hape-and-patterns-8ccf	Newspaper recount This week we are looking the Titanic Tragedy and writing a newspaper report. Titanic for Children Titanic Facts	Science, RE, History
Monday 16.11.20	To recognise, name and describe 3D shapes https://classroom.thenational.academy/lessons/to-recognise-name-and-describe-3d-shapes-cnjkcj	To look at features of a newspaper Look at the newspaper report below and discuss the features of the report with a grown up.	Science - Animals including humans What types of food do living things eat? Feed the animals game
Tuesday 17.11.20	To describe and classify 3D shapes https://classroom.thenational.academy/lessons/to-describe-and-classify-3d-shapes-70u3cc	To plan a newspaper report Using the question sheet below, choose 2 – 4 questions and research the answers to plan your newspaper report.	RE – What is the Christmas Story What is the Christmas story?
Wednesday 18.11.20	To identify 2D shapes https://classroom.thenational.academy/lessons/to-identify-2d-shapes-c9gkjd	To write a newspaper report. Using your plan from yesterday. Begin writing your newspaper report.	Geography – United Kingdom What is the United Kingdom?
Thursday 19.11.20	To describe and classify 2D shapes https://classroom.thenational.academy/lessons/to-describe-and-classify-2d-shapes-64ukjd	To write a newspaper report. Using your plan from Tuesday. Continue writing your newspaper report.	Geography – United Kingdom What can you find in the United Kingdom?
Friday 20.11.20	To recognise and create repeating patterns https://classroom.thenational.academy/lessons/to-recognise-and-create-repeating-patterns-6rtpac	SPAG Focus – Question Marks Questions are sentences which ask something. When we write a question, we should put a question mark (?) at the end of the sentence. Click the link to learn more about question marks. Question Marks	Geography – United Kingdom The history of London

Monday – Features of a Newspaper

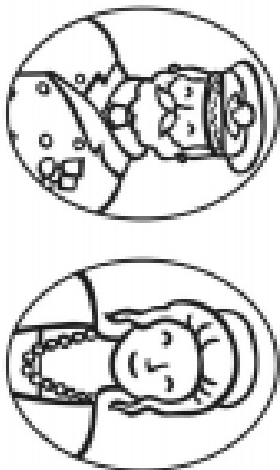
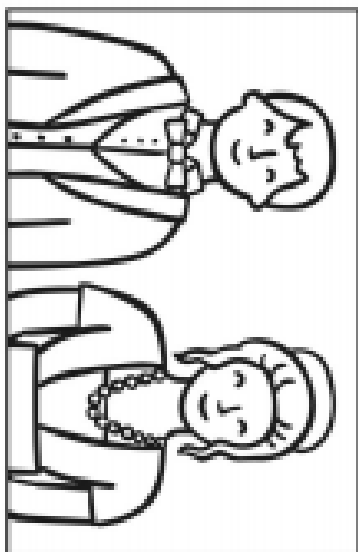
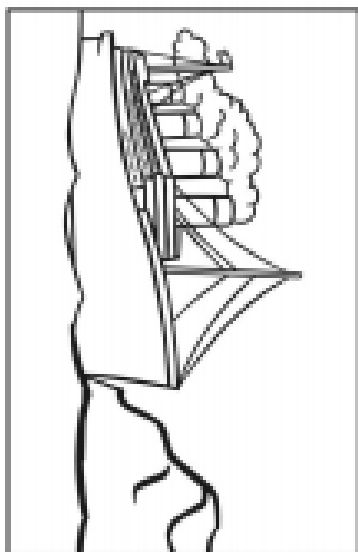
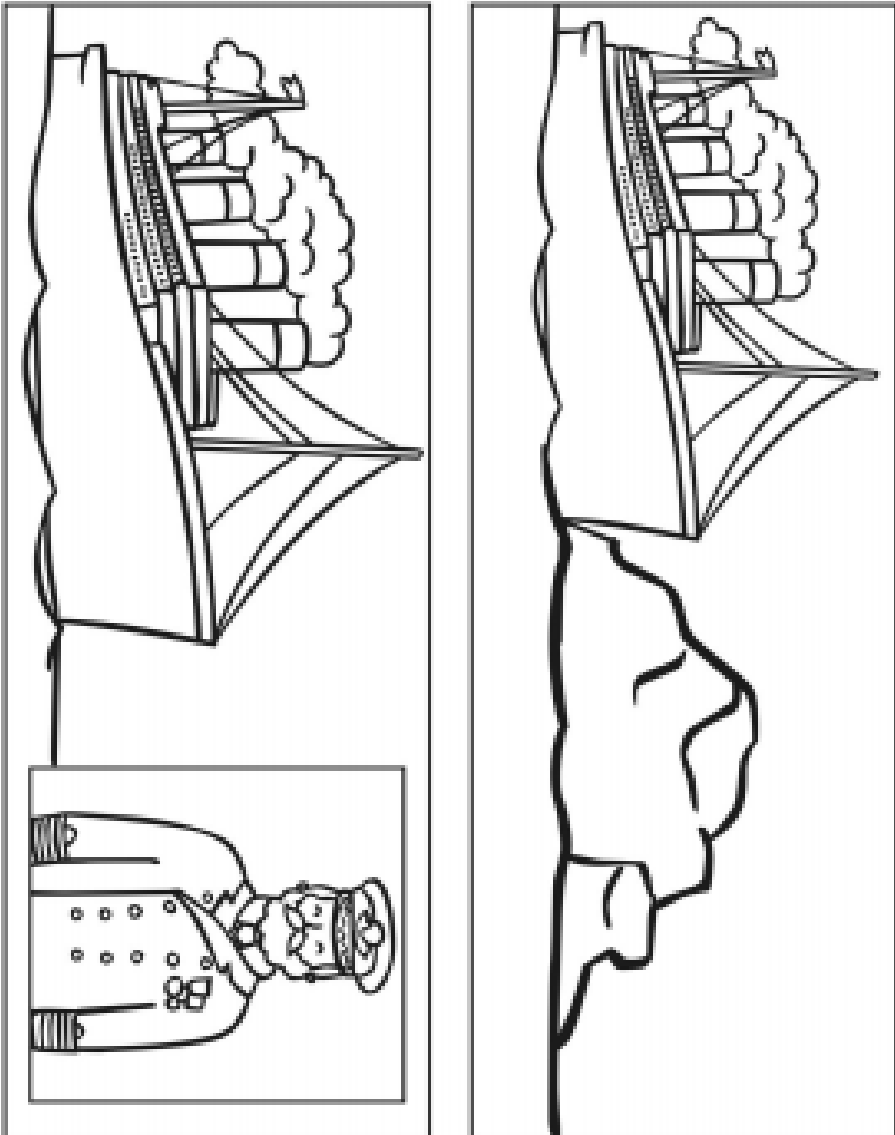


Tuesday - Plan your newspaper report



Choose an image to use for your newspaper report.

Cut, colour and stick the pictures below into your newspaper story or draw your own.
Don't forget to add captions to the pictures.



Dawley Primary News

Wednesday, 18th November 2020

50p

Titanic Sinks



Titanic, a ship built in Belfast sank on its maiden voyage and now lies at the bottom of the ocean.

Ship hit an iceberg

Titanic, the giant White Star Line passenger ship sank after a collision with an iceberg. The liner was on her maiden voyage when disaster struck on the night of the 14th April 1912.

The lookouts Frederick Fleet and Reginald Lee were in the Crow's nest when a shadow of an iceberg was spotted. The ship tried to move out of harm's way but it was too

late. The iceberg tore a massive hole in the starboard side of the ship. For the next 2 ½ hours, Captain Smith and his crew worked tirelessly to board women and children onto the 20 lifeboats aboard. At 2.10am on 15th April 1912, the Titanic slid under the water. There was only 700 survivors who were later rescued by the Carpathia.