



## YR5 PROGRESSION IN MASTERY LESSON PACK - TIMETABLES

### FLUENCY 1

Use the timetable to complete the stem sentences.

*London Euston Train Station Timetable*

London Euston	7:51	8:38	9:04	9:56	10:20
Milton Keynes	8:15	9:02	9:28	10:20	10:44
Stoke-on-Trent	-	10:04	-	11:22	11:46
Macclesfield	9:34	-	10:48	-	12:07
Stockport	9:46	10:33	11:00	11:51	12:19

It takes \_\_\_\_\_ minutes to travel between London Euston and Milton Keynes.

The 9:56 train takes \_\_\_\_\_ hour and \_\_\_\_\_ minutes to get to Stoke-on-Trent.

It takes \_\_\_\_\_ minutes longer to travel from London Euston to Stockport at 9:56 than at \_\_\_\_\_ or \_\_\_\_\_.

The \_\_\_\_\_ train has the longest journey time from London Euston to Stockport.

### FLUENCY 2

Use the information below to create a timetable of Marlon's school day.

The day starts at 8:55 with 10 minutes registration.

After registration, his first lesson is English for 45 minutes.

Next, he has maths for 40 minutes before break time.

At 10:50, his 20 minute spelling lesson begins.

Then, he has a topic lesson until lunch at 12:00.

After lunch, he has 135 minutes to finish his art project.

Following a 15 minute story time, he goes home at 3:30.





**FLUENCY 3**

Use your timetable of Marlon's day to complete the statements...

Marlon's maths lesson starts at \_\_\_\_\_.

His break time begins at \_\_\_\_\_.

His topic lesson is \_\_\_\_\_ minutes long.

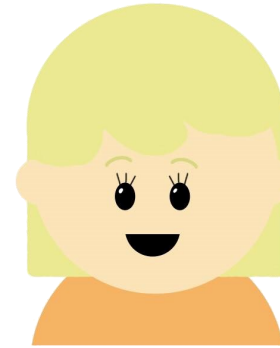
He has \_\_\_\_\_ hours and \_\_\_\_\_ minutes for his Art project.

He has \_\_\_\_\_ hour and \_\_\_\_\_ minutes in total for breaks.

His school day is \_\_\_\_\_ hours and \_\_\_\_\_ minutes long.

**FLUENCY 4**

On Friday nights, Jane likes to watch her favourite TV shows.



At 17:20, she watches The Tech Show for 110 minutes. Next, she watches Frankie's Funhouse for 150minutes. Afterwards, Cool Town is on for 1 hour and a quarter. Lastly, she watches Quick Toon for 180 seconds.

What time do each of the TV shows begin and end?





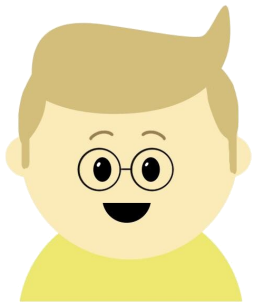
# YR5 PROGRESSION IN MASTERY LESSON PACK - TIMETABLES

## REASONING 1

Alfie thinks it takes 85 minutes to travel from Green Lane to the town centre on the 10:05 bus service.

Oak Grove Bus Time Table

Oxley Fields	7:39	8:57	10:05	11:18
Green Lane	8:31	9:44	10:52	12:05
Stanley Road	8:56	10:09	11:14	12:32
Town Centre	9:13	10:28	11:37	12:49



	1	<del>0</del>	:	<sup>1</sup> 3	7
-	1	0	:	5	2
			:	8	5

Is his calculation correct?

Convince me!

## REASONING 2

Use the timetable to prove which statements are true and which are false.

Foxton Leisure Centre Class Timetable

	5 - 6pm	6 - 7pm	7 - 8pm	8 - 9pm	9 - 10pm
Monday	Yoga	Swimming		Zumba	Boxing
Tuesday	Swimming		Tai Chi	Circuits	
Wednesday		Karate	Swimming		Ballet
Thursday	Swimming	Circuits		Yoga	Pilates
Friday	Zumba	Boxing	Salsa	Swimming	

There is a 2 hour swimming class every week day.

The karate class is 120 minutes long.

The yoga classes last for the same amount of time.

Each day, classes start at 17:00 and end at 22:00.

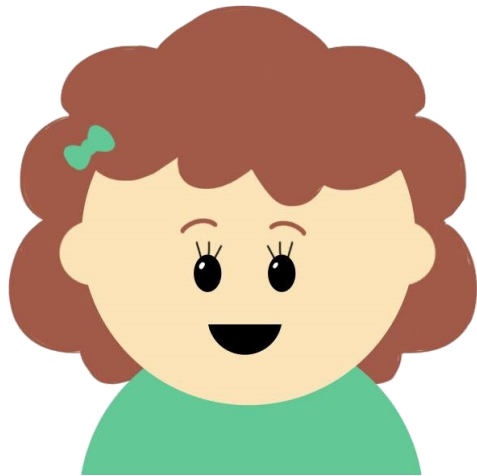




**PROBLEM SOLVING 1**

Darcey wants to put together a timetable of activities to do on Saturday and Sunday.

Use the following criteria to help her create one and fill any gaps with activities you think she'd enjoy!



She gets up at 9am and goes to bed at 9pm.

It takes her 45 minutes to have her breakfast and get ready.

She wants to watch cartoons for 150 minutes across both days.

She wants to play in the garden for at least 3 hours and 45 minutes.

She has lunch with her parents for half an hour at 12:15pm.

She has her evening meals at 18:30 and spends at least 45 minutes at the table.

She reads for 85 minutes every night before bed time.

**NOW...** compare your timetable with a classmate and discuss what is the same and what is different.

Create 5 questions about your timetable and challenge your classmates to work out the answers.

